

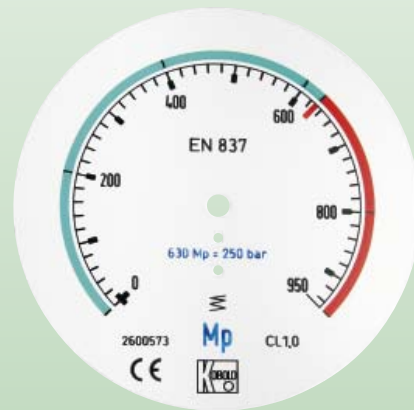


Options for Pressure Gauges



measuring
•
monitoring
•
analysing

MAN-OPT



- Marking and trailing pointer
- Housing designs
- Screws
- Special connections
- Special scales, high precision scale
- Calibration protocols



P1

KOBOLD companies worldwide:

ARGENTINA, AUSTRIA, BELGIUM, BULGARIA, CANADA, CHILE, CHINA, COLOMBIA, CZECHIA, DOMINICAN REPUBLIC, EGYPT, FRANCE, GERMANY, GREAT BRITAIN, HUNGARY, INDIA, INDONESIA, ITALY, MALAYSIA, MEXICO, NETHERLANDS, PERU, POLAND, ROMANIA, SINGAPORE, SOUTH KOREA, SPAIN, SWITZERLAND, TAIWAN, THAILAND, TUNISIA, TURKEY, USA, VIETNAM

KOBOLD Messring GmbH
Nordring 22-24
D-65719 Hofheim/Ts.
Head Office:
+49(0)6192 299-0
+49(0)6192 23398
info.de@kobold.com
www.kobold.com



Options for Pressure Gauges Model MAN-OPT

Housing diameter	NG 63	NG 80	NG 100	NG 160		
Model	MAN-RD	MAN-RE	MAN-RF MAN-PF	MAN-RG MAN-PG	MAN-F	MAN-K
	Code will be attached to the pressure gauge's order code (Example: MAN-RD21 AD A)					
Special Pointer						
Marking pointer, red, rear plate, adjustable	A	A	A	A	A	A
Trailing pointer, unfilled housing	B1	B1	B1	B1	B1	B1
MIN-/MAX-Trailing pointer, unfilled housing	B2	B2	B2	B2	B2	B2
Trailing pointer, filled housing	C1	C1	C1	C1	C1	C1
MIN-/MAX-Trailing pointer, filled housing	C2	C2	C2	C2	C2	C2
Housing designs						
Cover ring from st. steel 1.4301 for aluminium housing	D	D	D	D	D	D
Front flange, from stainless steel 1.4301	-	-	F	F	F	F
Front flange, chrome plated	-	-	G	G	G	G
Strap at rear for NG100, st. steel housing	-	-	H	-	-	-
Back flange	-	-	I	I	I	I
Triangle front ring	M	M	M	M	M	M
Screw						
Brass Bore hole 0.8 mm	L1	D	D	D	D	D
Brass Bore hole 0.5 mm	L2	F	F	F	F	F
Brass Bore hole 0.6 mm	L3	G	G	G	G	G
Stainless steel Bore hole 0.8 mm	N1	-	-	-	-	-
Stainless steel Bore hole 0.5 mm	N2	I	I	I	I	I
Stainless steel Bore hole 0.6 mm	N3	M	M	M	M	M
Special versions						
Spring loaded zero-stop and throttle	O	O	O	O	O	O
Unit oil-free and degreased	PF	PF	PF	PF	PF	PF
Unit silicone free	PS	PS	PS	PS	PS	PS
Unit vacuum safe	Q	Q	Q	Q	Q	Q
Safety glass, made of laminated glass	R	R	R	R	R	R
Special connections						
Brass M20x1,5	S	S	S	S	S	S
Stainless steel M20x1,5	T	T	T	T	T	T
Scales						
Special scales	U	U	U	U	U	U
Precision scale knife edge pointer DIN 16123/BL2	V	V	V	V	V	V
Marking coloured marking	W	W	W	W	W	W
Scales with company logo, one-time	X	X	X	X	X	X
Printed block artwork (per scale)	Z1	Z1	Z1	Z1	Z1	Z1
Printed block artwork for neutral scale (per scale) >25 pieces free of charge	Z2	Z2	Z2	Z2	Z2	Z2
Protocols and certificates						
Calibration protocol 5 measuring points	1	1	1	1	1	1
Calibration protocol 10 measuring points	2	2	2	2	2	2
DKD-certificate	3	3	3	3	3	3
Governmental approved calibration (< 400 bar)						
Cal. insignia class 1.0 cal. protocol	4	4	4	4	4	4
Cal. insignia class 0.6 cal. protocol	5	5	5	5	5	5
Governmental approved calibration (≥ 400 bar)	6	6	6	6	6	6

Marking pointer/trailing pointer



- Also as twofold version with a fixed and loose adjustment knob
- with a fixed and loose adjustment knob

Front flange for aluminium-housing



Front flange for stainless steel housing



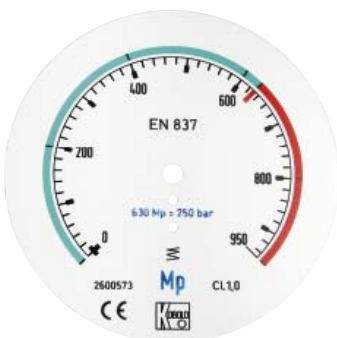
Triangle front ring



Back flange



Special scale



- multicolour
- Customer logo
- Up to four scales on one dial (similar to the pressure gauge used in refrigeration)
- Measuring point identification
- Special measuring ranges e. g.: -0,5 ... +0,5 bar
- Converted readings e. g.: kg, t (tons), m

Dimensions

Back flange/strap at rear

Code	NG	G	H	L
MAN-RF 22/26/72/76/24/74/28/78	100 mm st. steel	133	54	6xLK 116
MAN-RF 32/62/34/64	100 mm aluminium	133	44	6xLK 116
MAN-RG 22/26/72/76/24/74/28/78/28K/78K/32/62/34/64	160 mm st. steel	215	56	6xLK 178
MAN-RG 32/62/34/64	160 mm aluminium	215	49	6xLK 178

